

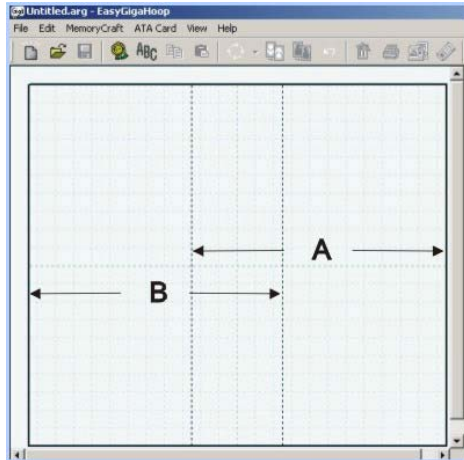
Using EasyGigaHoop Software

The GigaHoop measurements are 9"(wide) x 7.8"(high) - 23cm x 20cm. This equates to two B hoops side by side with a 2" (5cm) overlap.

EasyGigaHoop software has been developed to aide in the creation and sewing of large scale designs on the MC10000 and MC10001. There are two distinctly different ways to use the software....

1) Creating designs

EasyGigaHoop Screen View



Importing Designs.

Existing designs in .jef or .sew format are imported by clicking on the "flower" import icon.

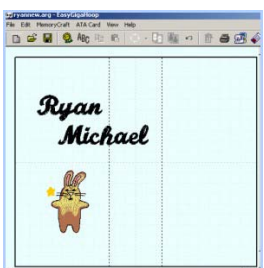


Designs are imported and arranged in desired placement. All designs that will sew in sewing space A are arranged first. If a design extends over the dotted boundary line it will turn grey and you will be asked to move the design to the left or right - move the design to the right to be included in side A or to the left to be included in side B. There are 7 fonts to choose from in EasyGigaHoop to add lettering to the arrangement.

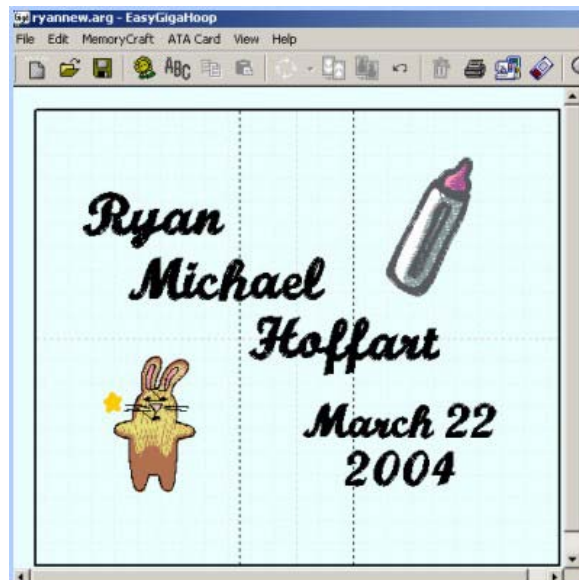
Side A:



Side B:

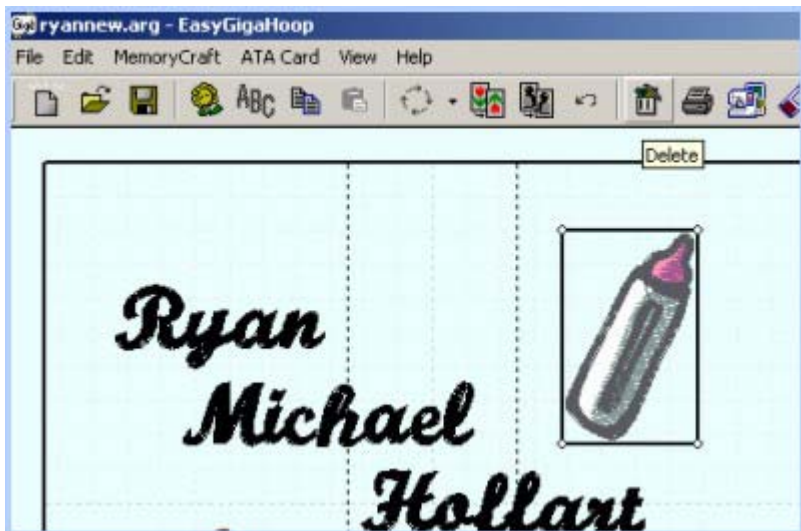




Entire Arrangement



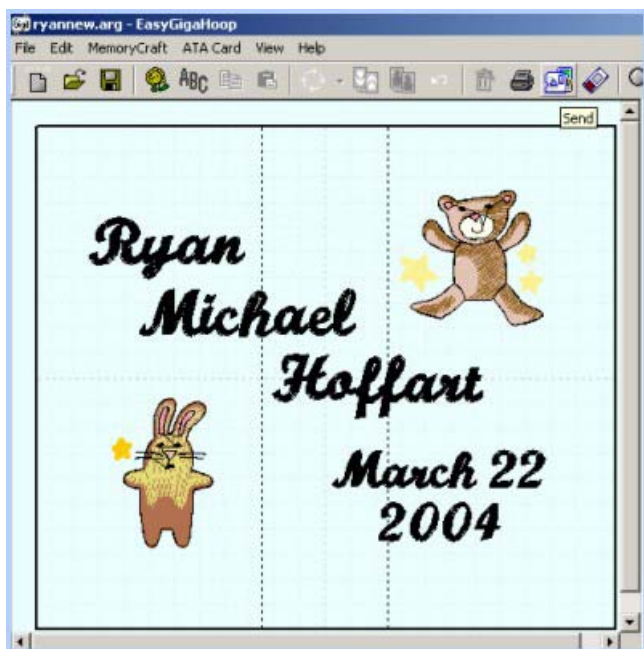
Arrangements can be edited, designs and lettering can be imported or removed until the desired look is achieved. Left click on the design to be removed, this will put a boundary around the design. Next, click the "garbage can" delete icon. You will be prompted to confirm that you want to delete the design, click yes to remove.

Editing and Deleting



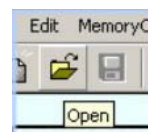
Once the arrangement is made, it can be saved for future use by clicking "File"/ "Save as" and named in the desired location on your computer. The file type that is created in EasyGigaHoop is called an .arg file. The design can be saved to an ATA PC card  or sent directly to your machine  through the USB cable. When the design is sent to the machine or card, it is split and the second file (B side) is rotated by the EasyGigaHoop software.

Final Design



2) Opening Existing Designs

If an .arg file is available for the GigaHoop, this means that it has already been arranged and is ready to open in EasyGigaHoop and sew. Arg files are **opened** instead of imported by clicking on the "**folder**" open icon, locate from computer or CD and open. The entire arrangement will appear on screen and is ready to save to ATA PC card or send to your machine.



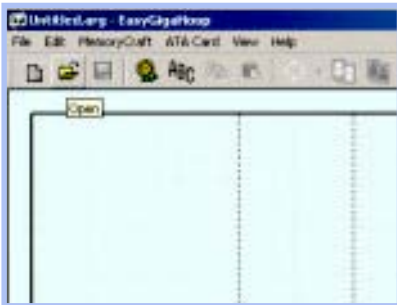
Stitchitize GigaHoop Designs

The Stitchitize GigaHoop designs have been made available on our CD's in two different formats: .ARG files and .JEF files. Determining which type of file is best for you will depend on whether or not you have EasyGigaHoop Software.

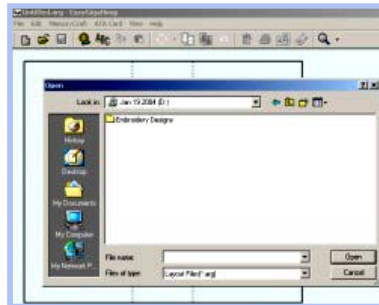
YES - you have EasyGigaHoop software.

In this case, it is best to use your EasyGigaHoop software and "open" the .ARG file from your CD. These files are the complete design (both sides) and can only be opened and sewn with the EasyGigaHoop software. Edits, such as adding lettering or size changes can be made to the .ARG file prior to sewing.

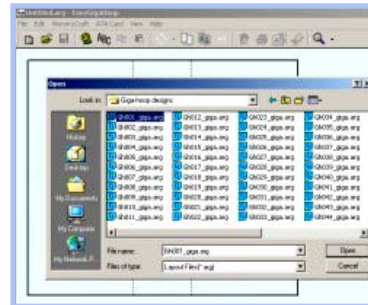
① OPEN FILE



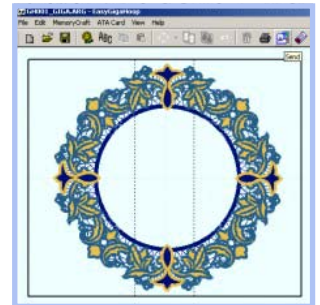
② SEARCH CD



③ SELECT DESIGN



④ VIEW DESIGN



The entire design will be seen on the screen and is ready to write to a ATA PC card or send directly to your machine. The EasyGigaHoop software automatically splits the design into two files during the writing/sending process. Also, when the second side appears on your machine screen, it will be upside down to sew in the turned hoop.

*If your machine is running Version 3, the design will be viewable in your machine as one complete file. The machine will prompt you when it is necessary to turn your hoop around for side 2. If your machine is running Version 2.1 or lower, the design will be viewable as 2 separate "B" hoop designs that you will need to select one at a time (select and sew A, turn hoop around, select and sew B)

NO - you do not have EasyGigaHoop software - **BUT** - you have EasyTransfer or EasyImport.

In this case, you will need to open the 2 separate .JEF files, one at a time, from your CD in EasyTransfer or EasyImport.

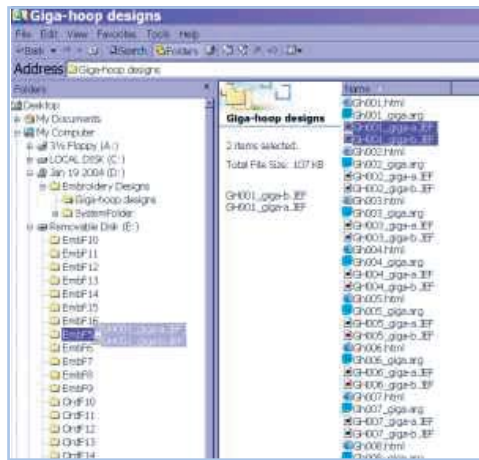
Open, Search, Select and View each design using your EasyTransfer or EasyImport and write to card or send to machine as you would with any "B" Hoop design. **Remember, the second side (Gh#_B.jef) has already been rotated to sew in the turned hoop so it will appear upside down on your screen.

NO - you do not have any software.

In this case you will need to use Windows Explorer to "drag and drop" the 2 separate .JEF files to your card.

1. Open Windows Explorer and locate your CD drive.
2. Open the Giga-Hoop designs folder to the right side of the split screen.
3. Open your Removable Disk drive on the left side of the screen.
4. Hold the "Ctrl" key down and left click both .JEF files for the desired design, Eg; Gh001_giga-a.JEF and Gh001_giga-b.JEF.

5. Left click and hold to "grab" both files and drag them to an EMB folder on the left side under Removable Disk drive.



NOTE:

If you have a MC300E or MC9500 you must put the files into the EMB5 folder only. If you are running a version 3 machine and are using the "drag and drop" method of file transfer your designs will be viewable on your machine as two separate "B" hoop files. If you want to view the complete Giga-Hoop design on screen you must rename the .JEF files prior to "dragging" to your card. This step is not mandatory in order to sew the designs but allows your machine to understand that a Giga-Hoop is sewing and not just two B-Hoop designs.

- Right click on each .JEF file to view the drop-down list. Left click "rename" and change the file name for eg: Gh001_giga-a.jef to Gh001_giga-1.jef and for Gh001_giga-b to Gh001_giga-2.jef.

Sewing with the GigaHoop



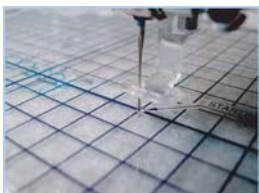
Once the designs are ready to sew and the fabric is hooped in the GigaHoop, place the plastic template (provided with the hoop) into the four notches on the inner hoop ring. Use the four "jog" keys on the screen:



Move the hoop until the needle passes through the Exact Center of the "Starting Point" hole in the template.



Sew the entire first design. When it is complete you will be prompted to remove and rotate the hoop.



Be sure to follow the same steps with the plastic template (needle passing through exact center of starting point) for the second side of the design. This will ensure that both sides will line up correctly.



With the use of the template, your large scale designs will line up perfectly!

Tips

- If your ATA PC Card is new, you will need to format it before trying to write designs to it. Insert the card and adapter into your machine. This will create the folder structure of emb folders (EmbF5 - F16) for embroidery and or folders (OrdF5 - F16) for ordinary sewing.
- Hooping for the GigaHoop requires more stability due to the larger sewing field. Hoop soft cut-away backing and your fabric together in the hoop to help reduce fabric movement.
- Be sure to use the plastic template to line up both sides of the design.
- The grid background in EasyGigaHoop is helpful when arranging designs and lettering. To make it more apparent click View / Background / Grid Change. Select a colour and click OK.
- When you are designing your own arrangement in EasyGigaHoop, try to keep a small amount of space between the design and the boundary lines to allow for the jog keys to line up the needle in the template starting point.