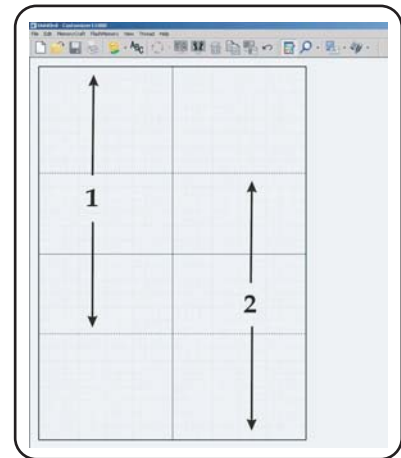


MacroHoop Instructions

The MacroHoop dimensions are 28cm H x 20cm W (11" x 7.9"). This equates to two 20cm x 20cm square hoops with a 12cm (4.7") overlap.

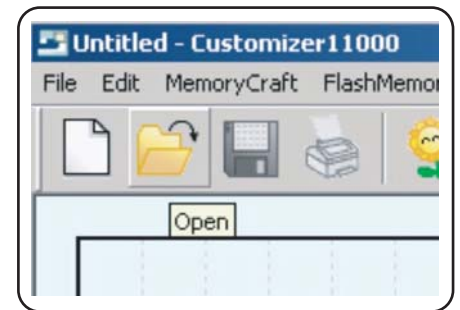


There are two ways to get the MacroHoop designs from this CD onto your machine and ready to sew.

1. Customizer 11000



If you have Customizer 11000 installed on your computer, the MacroHoop designs can be opened by clicking on the "Open" folder icon.



Search your computer for the CD drive, locate the design that you want to sew and open it on your Customizer screen.

The design can be saved to an ATA PC card

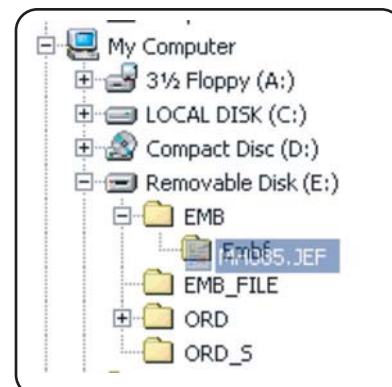


or sent directly to your machine



2. Drag and Drop

If Customizer 11000 is not available for use, the MacroHoop designs can be saved to your ATA PC card by locating and opening the CD in Windows Explorer. Click, Hold and Drag the design to the EMBf folder on your card.



SEWING WITH MACROHOOP

Hooping for the MacroHoop requires extra stability due to the larger sewing field. It is recommended that the fabric be prepared for embroidery with iron-on fusible larger than the hoop area OR a medium weight cut-away stabilizer (backing) be hooped with the fabric, together in the hoop. In addition, a layer of medium weight tearaway can be slid under the hoop for optimum stabilization of fabric and stitches.

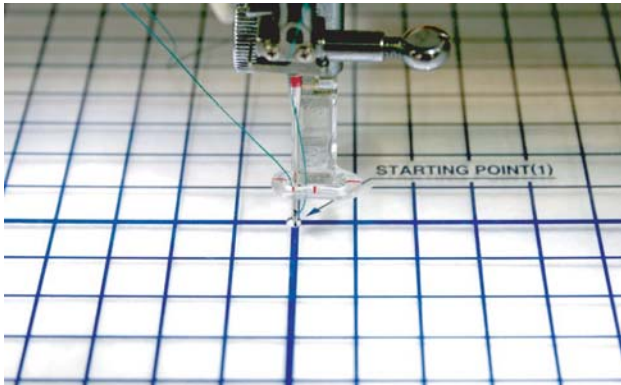


Place the plastic template (provided with the hoop) into the six notches on the inner hoop ring. Use the four "jog" keys on the screen:

Once the designs are ready to sew and the fabric is prepared and hooped in the MacroHoop, shift the frame to position 1 and attach to machine.



Move the hoop until the needle passes through the Exact Center of the "Starting Point" hole in the template.



Remove the plastic template and start sewing the design. Follow the colour stops to sew the entire first design. When it is complete you will be prompted to "lift presser foot and shift frame".



Detach the hoop from the machine and shift the frame to position 2 and reattach to machine.



Be sure to follow the same steps with the plastic template (needle passing through exact center of starting point) for the second side of the design. This will ensure that both sides will line up correctly.



Please Note:

When reading this CD from the Janome external CD-ROM drive, MacroHoop designs will display and sew as one complete design. The machine may not indicate when to Shift Frame. In order to Shift Frame to hoop position #2 at the correct stop in the design, you will need to follow the sewing sequence for the design found in the "Printable Pages" folder under "Sewing Sequences". Shift Frame to position #2 at Side Two as indicated on the sewing sequence.